

# Multi-Monitor Driver

## User's Manual

**For IBM Personal Computers and Compatibles  
with Windows 98SE/ME/2000/XP  
Driver and Pen Utilities Version 4.3**

The information contained in this document is subject to change without notice.

All trademarks referenced in this document belong to their respective owners.

## For Only one Tablet LCD Monitor

You may configure the Pen Device by modifying the functions of Pen Tip and Barrel Buttons, adjusting the feel of the Pen to heavier or lighter, and obtaining other information about the device. You may also use these functions to verify that the Pen Device is functioning properly.

You invoke the Configuration function by tapping with Pen Tip on the Tablet Icon (🖊️) on the system Task Bar, usually located at the lower right corner of the screen. You may also invoke it by first tapping on Start Button at the lower left corner of the screen, and selecting Settings then Control Panel, and finally double tapping on the Tablet Icon (🖊️).

When you invoke the Configuration function, you will be presented with a dialog with a number of configuration pages, as described below.

### The Info Configuration Page

The Info Configuration Page displays version and other information about the product.

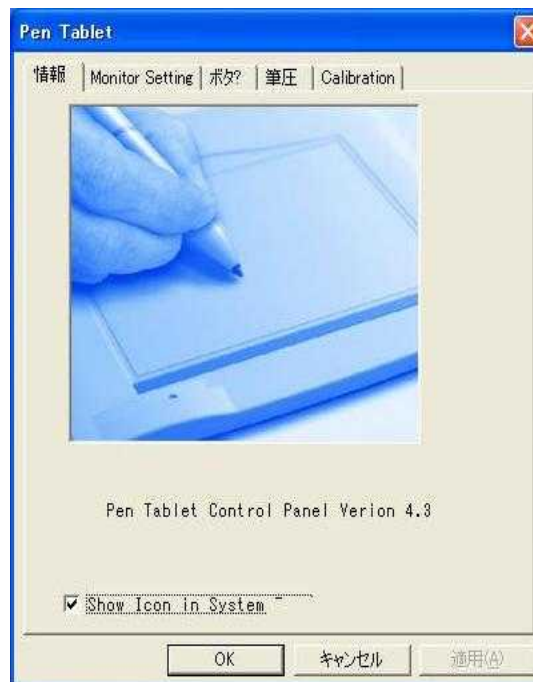


Figure 1 A Sample Info Configuration Page

# The Monitor Setting Configuration Page

You use the Monitor Setting Configuration page to map to the screen:

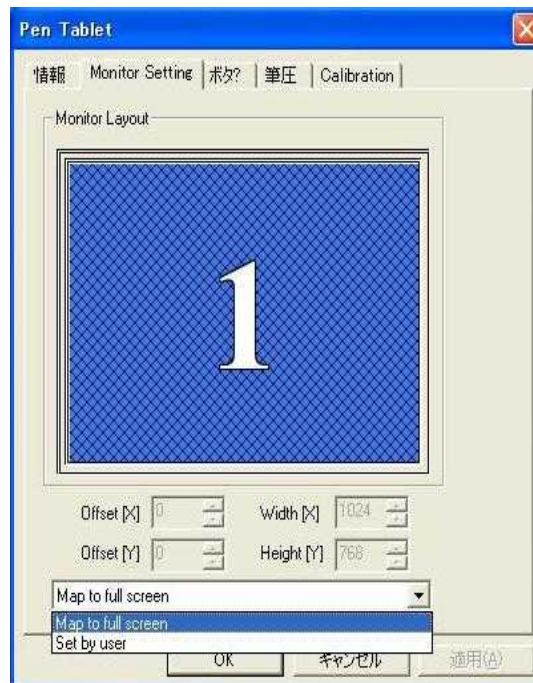
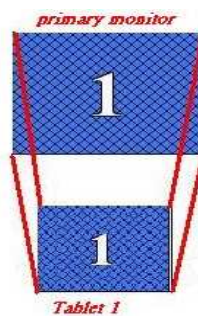


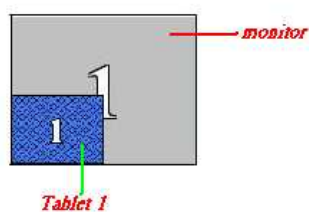
Figure 2 The Monitor Setting Configuration Page

- Map to full screen



- Set by user

You can set the Offset[X], Offset[Y], Width[X], Height[Y] that you want.



# The Button Configuration Page

You use the Button Configuration Page to change the functions of Pen Tip and Barrel Buttons, to set the speed of double tap with Pen Tip, and so on. This Page looks as follows:

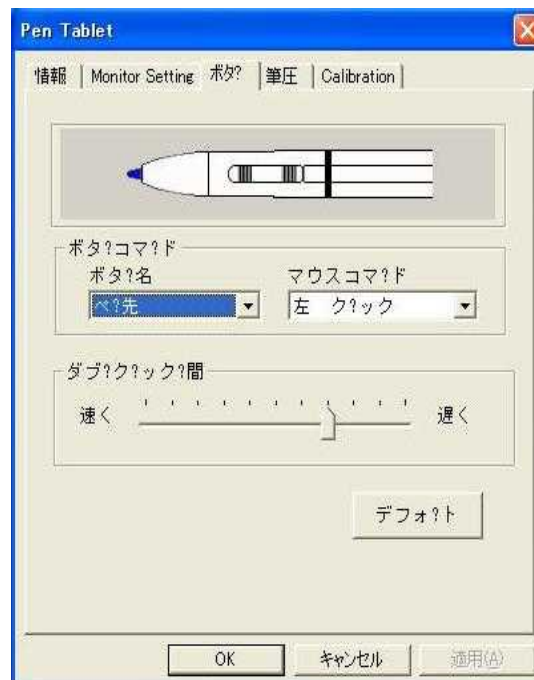


Figure 3 The Button Configuration Page

- **Mode**

When you move the Pen over the screen, the cursor on the screen moves instantly with it. The place of Pen's tip corresponds directly in position to the point on the screen.

- **Barrel Buttons**

The numerals 1 and 2 indicate where Barrel Button 1 and Barrel Button 2 are, respectively, on the body (barrel) of the Pen.

- **Button Command**

You may choose one of Pen Tip, Barrel Button 1, and Barrel Button 2, and set it to one of the Mouse Commands on a three-button mouse.

- **Double Click Time**

Move the Speed Slider toward "Slow" if you wish to allow yourself more time in double tapping with Pen Tip; move the Speed Slider toward "Fast" if you wish the reverse. This setting is the same

as Double-click Speed on the page displayed by selecting Start, Settings, Control Panel, Mouse, and Buttons. Changing the speed in one place changes the other at the same time.

- **Default**

You choose this option to restore all the settings on this Page to their respective values when the Tablet Monitor Driver was first installed.

## The Pressure Configuration Page

You use the Pressure Configuration Page to verify that Pressure Sensitivity works properly, and to make adjustments. The Pressure-Sensitive Pen can be used to draw heavier lines or darker colors when more force is applied to Pen Tip. This requires that the drawing application supports a Wintab-compatible interface and the Wintab-compatible driver is properly installed by installing the Tablet Monitor Driver as described before. The Pressure Configuration Page looks as follows:

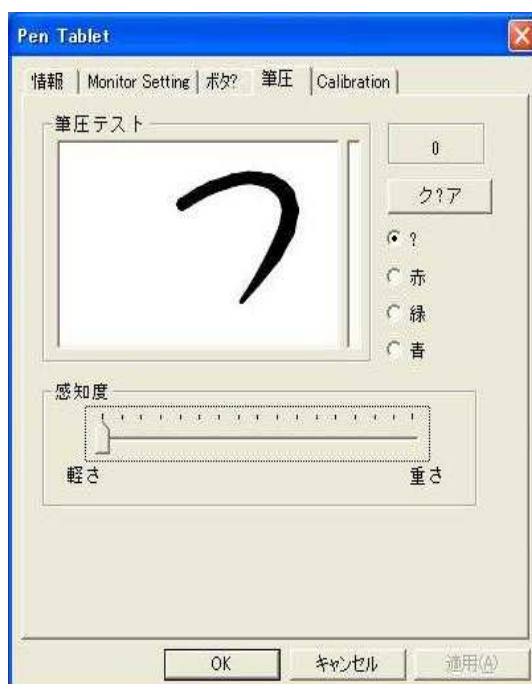


Figure 4 The Pressure Configuration Page

- **Pressure Test**

You may test the “ feel ” of the Pen in this area. When you draw with a lighter force pressing down on the screen, you will see a narrower line in this area; when you draw with more force, you will see that the Pen leaves a wider trace in the area. You may also choose a color for the test to get a better feel. While you draw, the barometer on the right side of the drawing area indicates the pressure level you are

applying to Pen Tip. At the same time, the numerical value of the pressure level is also shown on the right above the Clear Button.

- **Clear**

You press Clear Button to clear the drawing from Pressure Test area.

- **Click Sensitivity**


This controls the feel when you tap with the Pen to cause an action such as “ select ” . Tapping with Pen Tip is equivalent to “ clicking ” on the left button of a mouse unless you have changed it on the Button Configuration Page or you have changed the mouse setting on the Control Panel to “ left-handed ” . You move the Sensitivity Bar closer to “ low ” if you wish to get a “ click ” action with smaller force; you move it closer to “ high ” for a heavier pointing device. *Note: that this has nothing to do with how heavy you draw to get a thick line. Your application program controls the latter, not the Tablet Monitor Driver.*

## The Calibration Configuration Page

This Page provides the calibration function same as Windows Tablet PC system provided. The calibration function can adjust the deviation between the cursor and the pen tip and make the cursor presenting and following completely under the pen tip.



Figure 5 The Calibration Configuration Page

After you tap the "Calibration", the screen becomes completely white but Target Mark  appears in the left-up corner. Target Mark will appear orderly in the four corners of the screen after you use the pen tip to tap the center of Target Mark. When you finish tapping the four Target Marks in the four corners, select "OK" and the calibration process is completed.

## For one Tablet LCD Monitor and one general LCD Monitor

You may configure the Pen Device by modifying the functions of Pen Tip and Barrel Buttons, adjusting the feel of the Pen to heavier or lighter, and obtaining other information about the device. You may also use these functions to verify that the Pen Device is functioning properly.

You invoke the Configuration function by tapping with Pen Tip on the Tablet Icon (🖊️) on the system Task Bar, usually located at the lower right corner of the screen. You may also invoke it by first tapping on Start Button at the lower left corner of the screen, and selecting Settings then Control Panel, and finally double tapping on the Tablet Icon (🖊️).

When you invoke the Configuration function, you will be presented with a dialog with a number of configuration pages, as described below.

### The Info Configuration Page

The Info Configuration Page displays version and other information about the product.



*Figure 1 A Sample Info Configuration Page*

### The Monitor Setting Configuration Page

You use the Monitor Setting Configuration page to map to the screen:



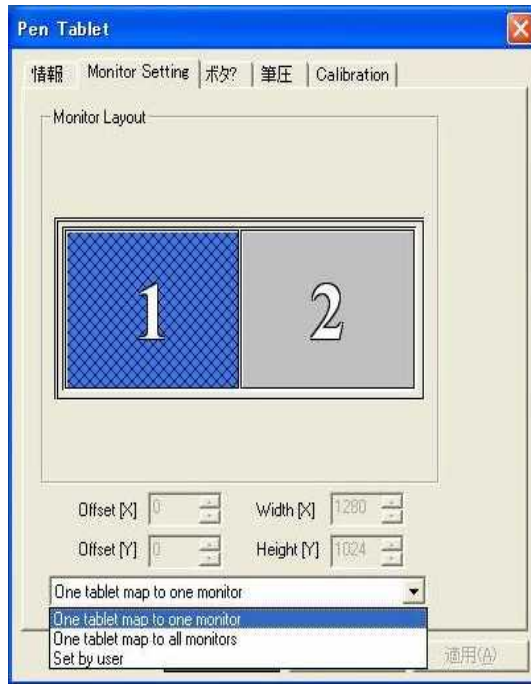
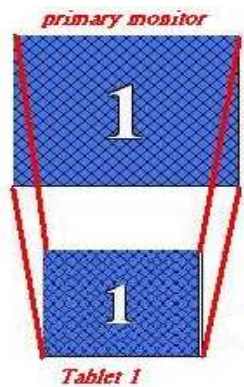
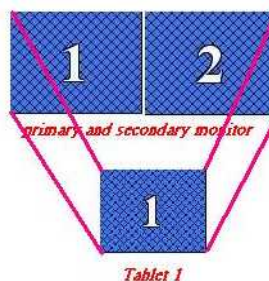


Figure 2 The Monitor Setting Configuration Page

- One tablet map to one monitor

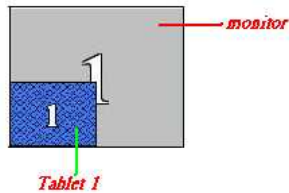


- One tablet map to all monitor



- Set by user

You can set the Offset[X] , Offset[Y] ,Width[X] , Height[Y] that you want.



## The Button Configuration Page

You use the Button Configuration Page to change the functions of Pen Tip and Barrel Buttons, to set the speed of double tap with Pen Tip, and so on. This Page looks as follows:



Figure 3 The Button Configuration Page

- **Mode**

When you move the Pen over the screen, the cursor on the screen moves instantly with it. The place of Pen's tip corresponds directly in position to the point on the screen.

- **Barrel Buttons**

The numerals 1 and 2 indicate where Barrel Button 1 and Barrel Button 2 are, respectively, on the body (barrel) of the Pen.

- **Button Command**

You may choose one of Pen Tip, Barrel Button 1, and Barrel Button 2, and set it to one of the Mouse Commands on a three-button mouse.

- **Double Click Time**

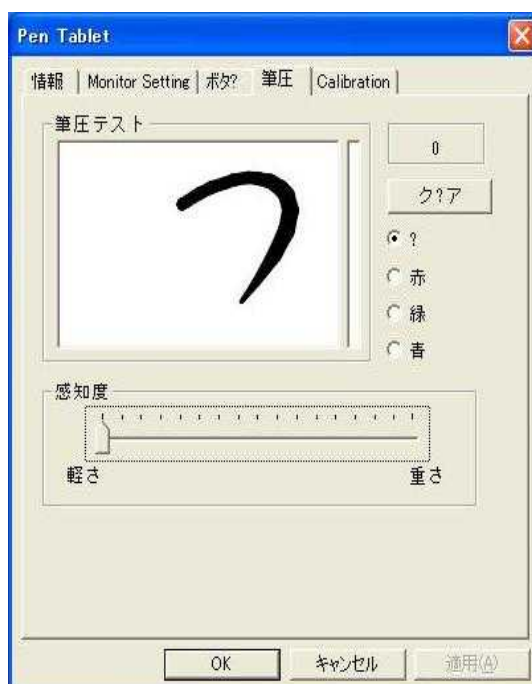
Move the Speed Slider toward “ Slow ” if you wish to allow yourself more time in double tapping with Pen Tip; move the Speed Slider toward “ Fast ” if you wish the reverse. This setting is the same as Double-click Speed on the page displayed by selecting Start, Settings, Control Panel, Mouse, and Buttons. Changing the speed in one place changes the other at the same time.

- **Default**

You choose this option to restore all the settings on this Page to their respective values when the Tablet Monitor Driver was first installed.

## The Pressure Configuration Page

You use the Pressure Configuration Page to verify that Pressure Sensitivity works properly, and to make adjustments. The Pressure-Sensitive Pen can be used to draw heavier lines or darker colors when more force is applied to Pen Tip. This requires that the drawing application supports a Wintab-compatible interface and the Wintab-compatible driver is properly installed by installing the Tablet Monitor Driver as described before. The Pressure Configuration Page looks as follows:



*Figure 4 The Pressure Configuration Page*

- **Pressure Test**

You may test the “ feel ” of the Pen in this area. When you draw with a lighter force pressing down on the screen, you will see a narrower line in this area; when you draw with more force, you will see that the Pen leaves a wider trace in the area. You may also choose a color for the test to get a better feel. While you draw, the barometer on the right side of the drawing area indicates the pressure level you are

applying to Pen Tip. At the same time, the numerical value of the pressure level is also shown on the right above the Clear Button.

- **Clear**

You press Clear Button to clear the drawing from Pressure Test area.

- **Click Sensitivity**

This controls the feel when you tap with the Pen to cause an action such as “ select ” . Tapping with Pen Tip is equivalent to “ clicking ” on the left button of a mouse unless you have changed it on the Button Configuration Page or you have changed the mouse setting on the Control Panel to “ left-handed ” . You move the Sensitivity Bar closer to “ low ” if you wish to get a “ click ” action with smaller force; you move it closer to “ high ” for a heavier pointing device.


*Note: that this has nothing to do with how heavy you draw to get a thick line. Your application program controls the latter, not the Tablet Monitor Driver.*

## The Calibration Configuration Page

This Page provides the calibration function same as Windows Tablet PC system provided. The calibration function can adjust the deviation between the cursor and the pen tip and make the cursor presenting and following completely under the pen tip.



Figure 5 The Calibration Configuration Page

After you tap the "Calibration", the screen becomes completely white but Target Mark  appears in the left-up corner. Target Mark will appear orderly in the four corners of the screen after you use the pen tip to tap the center of Target Mark. When you finish tapping the four Target Marks in the four corners, select "OK" and the calibration process is completed.

## For More than two Tablet LCD Monitor

You may configure the Pen Device by modifying the functions of Pen Tip and Barrel Buttons, adjusting the feel of the Pen to heavier or lighter, and obtaining other information about the device. You may also use these functions to verify that the Pen Device is functioning properly.

You invoke the Configuration function by tapping with Pen Tip on the Tablet Icon (🖊️) on the system Task Bar, usually located at the lower right corner of the screen. You may also invoke it by first tapping on Start Button at the lower left corner of the screen, and selecting Settings then Control Panel, and finally double tapping on the Tablet Icon (🖊️).

When you invoke the Configuration function, you will be presented with a dialog with a number of configuration pages, as described below.

### The Info Configuration Page

The Info Configuration Page displays version and other information about the product.

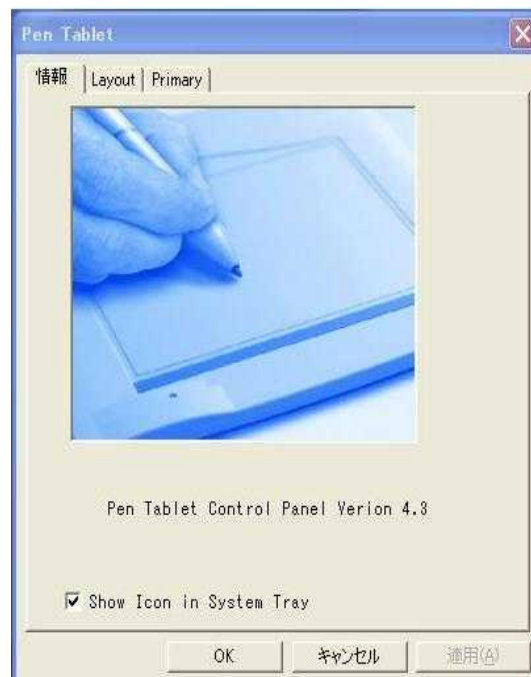


Figure 1 A Sample Info Configuration Page

### The Layout Configuration Page

*Note : The PC does not know which tablet is tablet 1 or tablet 2. So we have to set the primary monitor with tablet 1 and the secondary monitor with tablet 2.....*

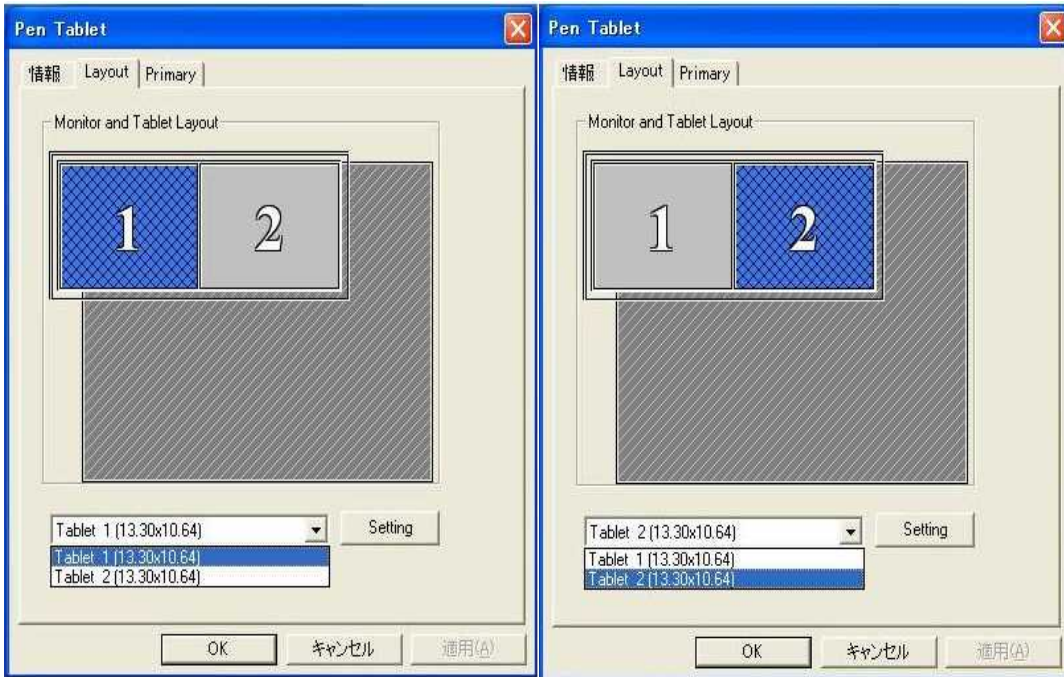


Figure 2 the Layout Configuration Page

After selecting Tablet 1 or Tablet 2 , and pushing the Setting button.

- The Monitor Setting Configuration Page

You use the Monitor Setting Configuration page to map to the screen:

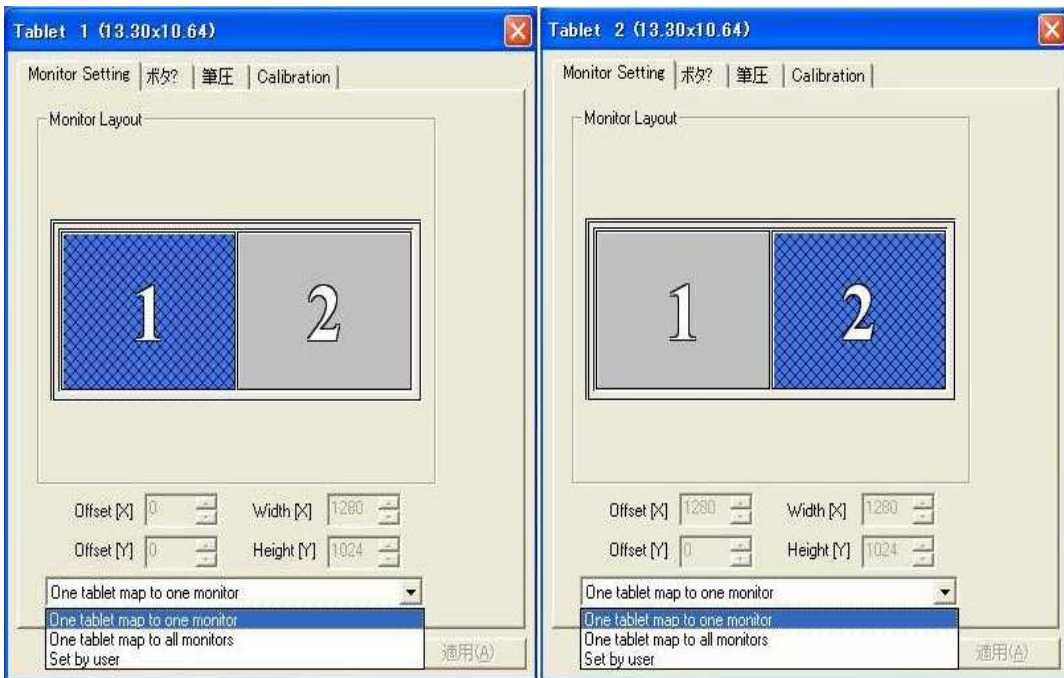
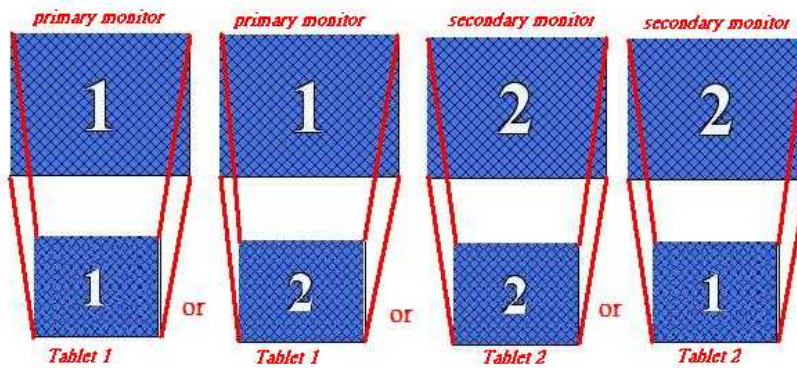
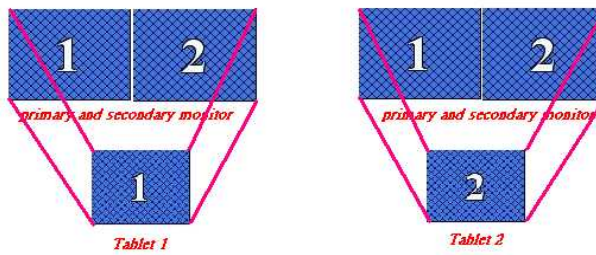


Figure 3 The Monitor Setting Configuration Page

- One tablet map to one monitor

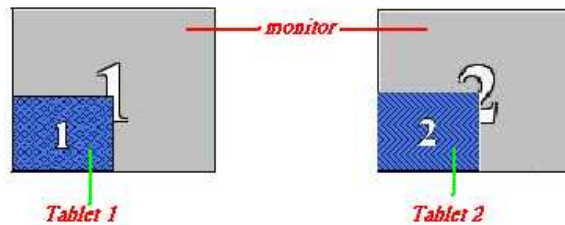


- One tablet map to all monitor



- Set by user

You can set the Offset[X] , Offset[Y] ,Width[X] , Height[Y] that you want.





- **The Button Configuration Page**

You use the Button Configuration Page to change the functions of Pen Tip and Barrel Buttons, to set the speed of double tap with Pen Tip, and so on. This Page looks as follows:



Figure 4 The Button Configuration Page

- ◆ **Mode**

When you move the Pen over the screen, the cursor on the screen moves instantly with it. The place of Pen's tip corresponds directly in position to the point on the screen.

- ◆ **Barrel Buttons**

The numerals 1 and 2 indicate where Barrel Button 1 and Barrel Button 2 are, respectively, on the body (barrel) of the Pen.

- ◆ **Button Command**

You may choose one of Pen Tip, Barrel Button 1, and Barrel Button 2, and set it to one of the Mouse Commands on a three-button mouse.

- ◆ **Double Click Time**

Move the Speed Slider toward "Slow" if you wish to allow yourself more time in double tapping with Pen Tip; move the Speed Slider toward "Fast" if you wish the reverse. This setting is the same as Double-click Speed on the page displayed by selecting Start, Settings, Control Panel, Mouse, and Buttons. Changing the speed in one place changes the other at the same time.

- ◆ **Default**

You choose this option to restore all the settings on this Page to their respective values when the Tablet Monitor Driver was first installed.

- **The Pressure Configuration Page**

You use the Pressure Configuration Page to verify that Pressure Sensitivity works properly, and to make adjustments. The Pressure-Sensitive Pen can be used to draw heavier lines or darker colors when more force is applied to Pen Tip. This requires that the drawing application supports a Wintab-compatible interface and the Wintab-compatible driver is properly installed by installing the Tablet Monitor Driver as described before. The Pressure Configuration Page looks as follows:



Figure 5 The Pressure Configuration Page

- ◆ **Pressure Test**

You may test the “ feel ” of the Pen in this area. When you draw with a lighter force pressing down on the screen, you will see a narrower line in this area; when you draw with more force, you will see that the Pen leaves a wider trace in the area. You may also choose a color for the test to get a better feel.

While you draw, the barometer on the right side of the drawing area indicates the pressure level you are applying to Pen Tip. At the same time, the numerical value of the pressure level is also shown on the right above the Clear Button.

- ◆ **Clear**

You press Clear Button to clear the drawing from Pressure Test area.

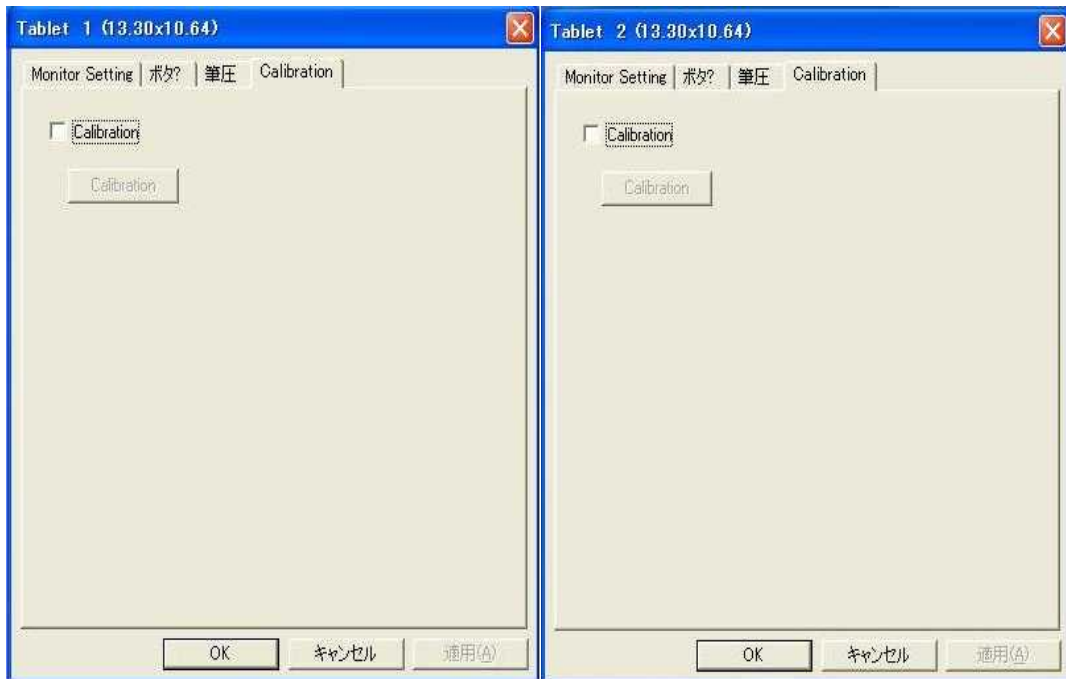
- ◆ **Click Sensitivity**

This controls the feel when you tap with the Pen to cause an action such as “ select ” . Tapping with Pen Tip is equivalent to “ clicking ” on the left button of a mouse unless you have changed it on the Button Configuration Page or you have changed the mouse setting on the Control Panel to “ left-handed ” . You move the Sensitivity Bar closer to “ low ” if you wish to get a “ click ” action with smaller force; you move it closer to “ high ” for a heavier pointing device.

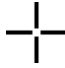
*Note: that this has nothing to do with how heavy you draw to get a thick line. Your application program controls the latter, not the Tablet Monitor Driver.*

- **The Calibration Configuration Page**

This Page provides the calibration function same as Windows Tablet PC system provided. The calibration function can adjust the deviation between the cursor and the pen tip and make the cursor presenting and following completely under the pen tip.



*Figure 6 The Calibration Configuration Page*

After you tap the "Calibration", the screen becomes completely white but Target Mark  appears in the left-up corner. Target Mark will appears orderly in the four corner of screen after you use the pen tip to tap the center of Target Mark. When you finish tapping the four Target Marks in the four corners, select "OK" and the calibration process is completed.

# The Primary Configuration Page

You use the Primary Configuration Page to set which one is the primary device for your application.

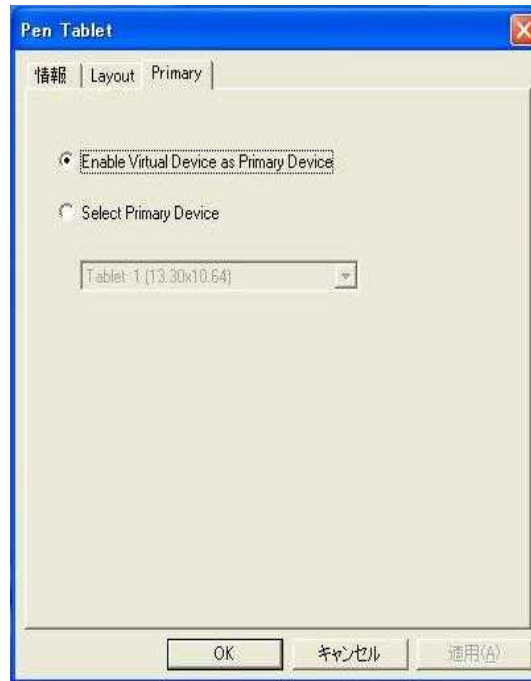


Figure 7 The Primary Configuration Page

- **Enable Virtual Device as Primary Device**

You have all tablet can be used by your application.

- **Select Primary Device**

You can select an input device which one of you have tablet as Primary Device for your application.

